

锰锌材料规格与尺寸 MnZn Material Specific

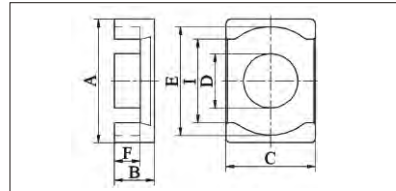


FIG.1

ER 型 / ER Core

型号 TYPE	图例 FIG.	A	B	C	D	E	F	重量 Weight
ER9.4/4.9/4.9D	1	9.35±0.2	4.9±0.2	4.9±0.2	4.9±0.2	1.65±0.15	7min	1.58 8.60 13.58 6.86 116.80 1450 1600 2200 min 2400 min 0.60
ER10.8/5.1/5.9	1	10.8±0.2	5.1±0.2	5.9±0.2	5.1±0.2	1.575±0.15	7min	1.58 8.60 13.58 6.86 116.80 1450 1600 2200 min 2400 min 0.60
ER14.5/6/7	2	14.5±0.2	6±0.2	7±0.2	6±0.2	1.65±0.15	7min	0.98 18.44 18.12 17.35 334.10 2800 3100 4200 min 4750 min 1.74
ER32/10.2/21B	1	32±0.6	10.2±0.2	21±0.2	10.2±0.2	2.7±0.15	23min	0.36 101.30 36.27 98.52 3674.20 9300 10500 15000 min 18200 min 19.10
ER32/12/11.4C	1	32±0.6	5.9±0.2	11.4±0.2	5.9±0.2	3.8±0.2	23min	0.65 59.00 39.00 47.88 2281.00 2550 6050 8750 min 10000 min 11.90